

# DIRECTING

# 7

## CHAPTER

### Grassroot Leadership - Ford Motor Co.

Ford has always attracted and nurtured capable managers and technicians, but it has failed to do the same for change agents and leaders. So, as part of the automaker's cultural overhaul, Ford is embarking on a sweeping attempt to mass-manufacture leaders. It wants to build an army of "warrior-entrepreneurs" — people who have the courage and skills to topple old ideas, and who believe in change passionately enough to make it happen.

Ford will send about 2,500 managers to its Leadership Development Center for one of its four programs — Capstone, Experienced Leader Challenge, Ford Business Associates, and New Business Leader — instilling in them not just the mind-set and vocabulary of a revolution but also the tools necessary to achieve a revolution. At the same time, through the Business Leaders Initiative, all 100,000 salaried employees worldwide will participate in business-leadership "cascades," intense exercises that combine trickle-down communications with substantive team projects.

Ford views grassroot leadership as the best vehicle for creating a successful business.

*Adapted from an article on <http://www.fastcompany.com/online/33/ford.html>*

### LEARNING OBJECTIVES

After studying this chapter, you should be able to:

- Explain the concept of directing and its importance in business organisations;
- Understand the principles guiding directing process;
- Explain the meaning of supervision and its importance;
- Explain the meaning of motivation and its importance in business management;
- Understand and explain Maslow's theory of hierarchy of needs and its application to motivation of employees in an organisation;
- Explain the financial and non-financial incentives through which managers motivate their employees;
- Explain the concept of leadership and its importance in management;
- Describe the qualities of a good leader;
- Explain about formal and informal communications in the organisations; and
- Identify various barriers to effective communications and measures to overcome these barriers in the organisations.

## INTRODUCTION

The above case reveals how important it is to instill leadership qualities in all managers. Business organisations have always given due importance to its managers who are capable of leading others. A manager needs to use various ways to lead, motivate and inspire the subordinates and to communicate with them suitably. These ways, discussed in the present chapter, are collectively called the directing function of management.

## MEANING

In the ordinary sense, directing means giving instructions and guiding people in doing work. In our daily life, we come across many situations like a hotel owner directing his employees to complete certain activities for organising a function, a teacher directing his student to complete an assignment, a film director directing the artists about how they should act in the film etc. In all these situations, we can observe that directing is done to achieve some predetermined objective.

In the context of management of an organisation, directing refers to the process of instructing, guiding, counselling, motivating and leading people in the organisation to achieve its objectives.

You can observe here that directing is not a mere issue of communication but encompasses many elements like supervision, motivation and leadership. It is one of the key managerial functions

performed by every manager. Directing is a managerial process which takes place throughout the life of an organisation.

The main characteristics of directing are discussed below:

- (i) *Directing initiates action:* Directing is a key managerial function. A manager has to perform this function along with planning, organising, staffing and controlling while discharging his duties in the organisation. While other functions prepare a setting for action, directing initiates action in the organisation.
- (ii) *Directing takes place at every level of management:* Every manager, from top executive to supervisor performs the function of directing. The directing takes place wherever superior – subordinate relations exist.
- (iii) *Directing is a continuous process:* Directing is a continuous activity. It takes place throughout the life of the organisation irrespective of people occupying managerial positions. We can observe that in organisations like Infosys, Tata, BHEL, HLL and the managers may change but the directing process continues because without direction the organisational activities can not continue further.
- (iv) *Directing flows from top to bottom:* Directing is first initiated at top level and flows to the bottom through organisational hierarchy.

It means that every manager can direct his immediate subordinate and take instructions from his immediate boss.

## IMPORTANCE OF DIRECTING

The importance of directing can be understood by the fact that every action in the organisation is initiated through directing only. Directing integrates people towards achievement of common objectives. Through directing, managers not only tell the people in the organisation as to what they should do, when they should do and how they should do but also see that their instructions are implemented in proper perspective. Very often, this becomes important factor in the efficient and effective functioning of the organisation. The points which emphasise the importance of directing are presented as follows:

- (i) Directing helps to initiate action by people in the organisation towards attainment of desired objectives. For example, if a supervisor guides his subordinates and clarifies their doubts in performing a task, it will help the worker to achieve work targets given to him.
- (ii) Directing integrates employees' efforts in the organisation in such a way that every individual effort contributes to the organisational performance. Thus, it ensures that the individuals work for organisational goals. For example,

a manager with good leadership abilities will be in a position to convince the employees working under him that individual efforts and team effort will lead to achievement of organisational goals.

- (iii) Directing guides employees to fully realise their potential and capabilities by motivating and providing effective leadership. A good leader can always identify the potential of his employees and motivate them to extract work up to their full potential.
- (iv) Directing facilitates introduction of needed changes in the organisation. Generally, people have a tendency to resist changes in the organisation. Effective directing through motivation, communication and leadership helps to reduce such resistance and develop required cooperation in introducing changes in the organisation. For example, if a manager wants to introduce new system of accounting, there may be initial resistance from accounting staff. But, if manager explains the purpose, provides training and motivates with additional rewards, the employees may accept change and cooperate with manager.
- (v) Effective directing helps to bring stability and balance in the organisation since it fosters cooperation and commitment

among the people and helps to achieve balance among various groups, activities and the departments.

## PRINCIPLES OF DIRECTING

Providing good and effective directing is a challenging task as it involves many complexities. A manager has to deal with people with diverse background, expectations. This complicates the directing process. Certain guiding principles of directing may help in directing process. These principles are briefly explained below:

- (i) *Maximum individual contribution:* This principle emphasises that directing techniques must help every individual in the organisation to contribute to his maximum potential for achievement of organisational objectives. It should bring out untapped energies of employees for the efficiency of organisation. For example, a good motivation plan with suitable monetary and non-monetary rewards can motivate an employee to contribute his maximum efforts for the organisation as he or she may feel that their efforts will bring them suitable rewards.
- (ii) *Harmony of objectives:* Very often, we find that individual objectives of employees and the organisational objectives as understood are conflicting to each other. For example, an employee may expect attractive salary and monetary
- benefits to fulfill his personal needs. The organisation may expect employees to improve productivity to achieve expected profits. But, good directing should provide harmony by convincing that employee rewards and work efficiency are complimentary to each other.
- (iii) *Unity of Command:* This principle insists that a person in the organisation should receive instructions from one superior only. If instructions are received from more than one, it creates confusion, conflict and disorder in the organisation. Adherence to this principle ensures effective direction.
- (iv) *Appropriateness of direction technique:* According to this principle, appropriate motivational and leadership technique should be used while directing the people based on subordinate needs, capabilities, attitudes and other situational variables. For example, for some people money can act as powerful motivator while for others promotion may act as effective motivator.
- (v) *Managerial communication:* Effective managerial communication across all the levels in the organisation makes direction effective. Directing should convey clear instructions to create total understanding to subordinates. Through proper feedback, the

managers should ensure that subordinate understands his instructions clearly.

(vi) *Use of informal organisation:*

A manager should realise that informal groups or organisations exist within every formal organisation. He should spot and make use of such organisations for effective directing.

(vii) *Leadership:* While directing the subordinates, managers should exercise good leadership as it can influence the subordinates positively without causing dissatisfaction among them.

(viii) *Follow through:* Mere giving of an order is not sufficient. Managers should follow it up by reviewing continuously whether orders are being implemented accordingly or any problems are being encountered. If necessary, suitable modifications should be made in the directions.

## ELEMENTS OF DIRECTION

The process of directing involves guiding, coaching, instructing, motivating, leading the people in an organisation to achieve organisational objectives. Consider the following examples: (i) A supervisor explains a worker about operations to be carried by him on a lathe machine, (ii) A mining engineer explains about safety precautions to be followed while working in a coal mine, (iii) A Managing Director declares share in the profits

to the managers for their contribution to enhance profits of the company, and (iv) A manager inspires his/her employees by playing a lead role in performing a work.

All these examples and many other activities related to directing may broadly be grouped into four categories which are the elements of directing. These are:

- (i) Supervision
- (ii) Motivation
- (iii) Leadership
- (iv) Communication

To know more about directing, these elements are discussed in detail.

## SUPERVISION

The term supervision can be understood in two ways. Firstly, it can be understood as an element of directing and secondly, as a function performed by supervisors in the organisational hierarchy.

Supervision being an element of directing, every manager in the organisation supervises his/her subordinates. In this sense, supervision can be understood as the process of guiding the efforts of employees and other resources to accomplish the desired objectives. It means overseeing what is being done by subordinates and giving instructions to ensure optimum utilisation of resources and achievement of work targets.

Secondly, supervision can be understood as the function to be performed by supervisor, a managerial

position in the organisation hierarchy at the operative level i.e., immediately above the worker. The functions and performance of the supervisor are vital to any organisation because he is directly related with workers whereas other managers have no direct touch with bottom level workers.

### Importance of Supervision

The importance of supervision can be understood from multiple roles performed by a supervisor. These are explained below:

- (i) Supervisor maintains day-to-day contact and maintains friendly relations with workers. A good supervisor acts as a guide, friend and philosopher to the workers.
- (ii) Supervisor acts as a link between workers and management. He conveys management ideas to the workers on one hand and workers problems to the management on the other. This role played by supervisor helps to avoid misunderstandings and conflicts between management and workers/employees.
- (iii) Supervisor plays a key role in maintaining group unity among workers placed under his control. He sorts out internal differences

### Directing a Dissatisfied Manager

Rashmi Joshi had been a district sales manager with Fine Productions for ten years. She was recognised by her peers and supervisors as a person who managed department in a good way. However, everyone realised that Rashmi was extremely ambitious and was seeking a higher-level management position. When one of her sales representatives did a good job, she would attempt to take the credit. However, if a problem arose, she thought it was not her fault. When the marketing manager retired, Rashmi applied for the position. The company decided to do a thorough search because of the responsibility and importance associated with the position. When the search was concluded, the decision was made to fill the position by a person from outside the company. The consensus of top management was that Rashmi, although a good district sales manager might have difficulties in working with her new peer groups. They felt that she might displease the other managers if she tried to take credit for their work and, as a result, their performance would suffer.

Rashmi was heart-broken. She had wanted that particular job for a long time and had dedicated all her energies towards obtaining it. She became very despondent and her work deteriorated. The department functioned in spite of her, not because of her. Decisions were made slowly if at all and she began to be late with her sales reports. Although her sales staff continued to be productive, Rashmi could not take the credit.

When the new marketing manager took over, one of the first major problems that he confronted was how to motivate and inspire Rashmi to her former level of performance. He recognised that Rashmi had been with the company for a long time but something had to be done to motivate her to perform really well.

and maintains harmony among workers.

- (iv) Supervisor ensures performance of work according to the targets set. He takes responsibility for task achievement and motivates his workers effectively.
- (v) Supervisor provides good on-the-job training to the workers and employees. A skilled and knowledgeable supervisor can build efficient team of workers.
- (vi) Supervisory leadership plays a key role in influencing the workers in the organisation. A supervisor with good leadership qualities can build up high morale among workers.
- (vii) A good supervisor analyses the work performed and gives feedback to the workers. He suggests ways and means of developing work skills.

## MOTIVATION

The case of Rashmi reveals an important fact of managerial work; it is not always possible to get the best of work from employees merely by exercising formal authority. What makes people to behave the way they do? Why are some people reluctant to do the work though they have ability to do? What should be done to make people work effectively?

For answering these questions, a manager should try to develop insights into causes of behaviour of people. A manager may come across

highly committed and hardworking staff or lazy, evasive and superficial workers. He or she may wonder what to do with workers not willing to work to their potential. Psychologists say it is motivation, which stimulates people to take up work voluntarily.

Let us try to understand something about motivation.

**Motivation:** Motivation means incitement or inducement to act or move. In business context, it means the process of making subordinates to act in a desired manner to achieve certain organisational goals.

While discussing about motivation, we need to understand three inter related terms — motive, motivation and motivators. Let us try to know about these terms.

- (i) *Motive:* A motive is an inner state that energises, activates or moves and directs behaviour towards goals. Motives arise out of the needs of individuals. Realisation of a motive causes restlessness in the individual which prompts some action to reduce such restlessness. For example, the need for food causes hunger an account of which a man searches for food. Some such motives are – hunger, thirst, security, affiliation, need for comfort, recognition etc.,
- (ii) *Motivation:* Motivation is the process of stimulating people to action to accomplish desired goals. Motivation depends upon satisfying needs of people.



### Definitions on Motivation

Motivation means a process of stimulating people to action to accomplish desired goals

*William G. Scout*

Motivation refers to the way in which urges, drives, desires, aspirations, strivings or needs direct, control and explain the behaviour of human beings.

*Mc Farland*

Motivation is the complex forces starting and keeping a person at work in an organisation. Motivation is something which moves the person to action and continues him in the course of action already initiated.

*Dubin*

Motivation is a process which begins with a physiological or psychological need or deficiency which triggers behaviour or a drive that is aimed at a goal or incentive.

*Fred Luthans*

(iii) **Motivators:** Motivator is the technique used to motivate people in an organisation. Managers use diverse motivators like pay, bonus, promotion, recognition, praise, responsibility etc., in the organisation to influence people to contribute their best.

Some of the definitions to explain the concept of motivation are given in the above box.

**Features of Motivation:** The analysis of various definitions and viewpoints on motivation reveals the following features of motivation:

(i) Motivation is an internal feeling. The urge, drives, desires, aspirations, striving or needs of human being, which are internal, influence human behaviour. For example, people may have the urge for possessing a motorbike, comfortable house, reputation in the society. These urges are internal to an individual.

(ii) Motivation produces goal directed behaviour. For example, the promotion in the job may be given to employee with the objective of improving his performance. If the employee is interested in promotion, it helps to produce a behaviour to improve performance.

(iii) Motivation can be either positive or negative. Positive motivation provides positive rewards like increase in pay, promotion, recognition etc., Negative motivation uses negative means like punishment, stopping increments, threatening etc. which also may induce a person to act in the desired way.

(iv) Motivation is a complex process as the individuals are heterogeneous in their expectations, perceptions and reactions. Any type of motivation may not have uniform effect on all the members.



**Motivation Process:** Motivation process is based on human needs. A simple model to explain motivation process is presented below.

The following example explains the process of satisfaction of human needs.

Ramu is very hungry since he did not have breakfast in the morning. By 1.00 P.M., he became restless and started walking on the road in search of a hotel for snacks or meals. After

walking for 2 kms, he could find a hotel where roti and dal was available for Rs. 10. Since he had only Rs. 15 in his pocket, he paid Rs. 10 and had a satisfying meal. After taking a meal, he felt that he had regained energy.

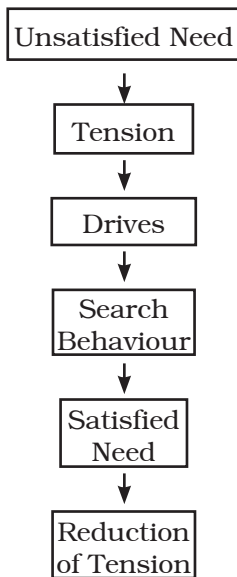
An unsatisfied need of an individual creates tension which stimulates his or her drives. These drives generate a search behaviour to satisfy such need. If such need is satisfied, the individual is relieved of tension.

### Motivating Employees in Tata Steel

In Tata Steel several initiatives have been taken to further improve the motivation levels and participation in the decision making process of the officers, greater impetus to training through a formalised system of a personal development programme, talent review and job rotation systems, compensation linked to the performance management system, formal rewards and recognition systems, knowledge management systems linked with appraisals, leadership opportunities in quality circles, continuous improvement and value engineering programmes and an extremely transparent and credible multi-path communication system to address queries and concerns of all employees through various dialogues both formal and online, with such tools as video conferencing, 'MD Online', special dialogues with senior management, meetings, conferences and seminars. These initiatives have helped to build a homogeneous and focused team in Tata Steel, increasing motivation and binding to the vision of the company and spurred employees to deliver targets on a participatory management basis leading to ownership of processes.

Tata Steel is a company that actively promotes freedom to work, freedom to innovate and even the freedom to fail. It is a nimble, fast, modern and forward-looking company on a strong growth path. The company has undergone a revolutionary change in terms of its production facilities and the technology in the manufacturing process. These changes have resulted in creating greater opportunities for taking up newer challenges for young recruits work and for performance based on IT enabled systems and high levels of automation. These have led to making the company one of the lowest cost producers of steel and the only Indian company to be recognised by the World Steel Dynamics as one of the top most 'World Class' steel makers. Tata Steel hopes not only to consolidate but better its leadership by robust leadership development systems that have seen the company create many CEOs for other companies.

[http://www.tata.com/tata\\_steel/releases/20030829.htm](http://www.tata.com/tata_steel/releases/20030829.htm)



**Importance of Motivation:** In the example of Tata Steel you have seen how the direction, motivation and effective leadership has taken the company forward. Even communication systems in the company have encouraged employees to achieve targets.

Motivation is considered important because it helps to identify and satisfy the needs of human resources in the organisation and thereby helps in improving their performance. It is the reason why every major organisation develops various kinds of motivational programmes and spends crores of rupees on these programmes. The importance of motivation can be pointed out by the following benefits:

(i) Motivation helps to improve performance levels of employees

as well as the organisation. Since proper motivation satisfies the needs of employees, they in turn devote all their energies for optimum performance in their work. A satisfied employee can always turnout expected performance. Good motivation in the organisation helps to achieve higher levels of performance as motivated employees contribute their maximum efforts for organisational goals.

(ii) Motivation helps to change negative or indifferent attitudes of employee to positive attitudes so as to achieve organisational goals. For example, a worker may have indifferent or negative attitude towards his work, if he is not rewarded properly. If suitable rewards are given and supervisor gives positive encouragement and praise for the good work done, the worker may slowly develop positive attitude towards the work.

(iii) Motivation helps to reduce employee turnover and thereby saves the cost of new recruitment and training. The main reason for high rate of employee turnover is lack of motivation. If managers identify motivational needs of employees and provide suitable incentives, employees may not think of leaving the organisation. High rate of turnover compels management to go for new recrui-

tment and training which involve additional investment of money, time and effort. Motivation helps to save such costs. It also helps to retain talented people in the organisation.

- (iv) Motivation helps to reduce absenteeism in the organisation. Some important reasons for absenteeism are—bad working conditions, inadequate rewards, lack of recognition, poor relations with supervisors and colleagues etc. Through sound motivational system, all these deficiencies can be covered. If motivation is adequately provided, work becomes a source of pleasure and workers attend to the work regularly.
- (v) Motivation helps managers to introduce changes smoothly without much resistance from people. Normally, for any change introduced in the organisation, there may be resistance for changes. If manager can convince employees that proposed changes will bring additional rewards to employees, they may readily accept the change.

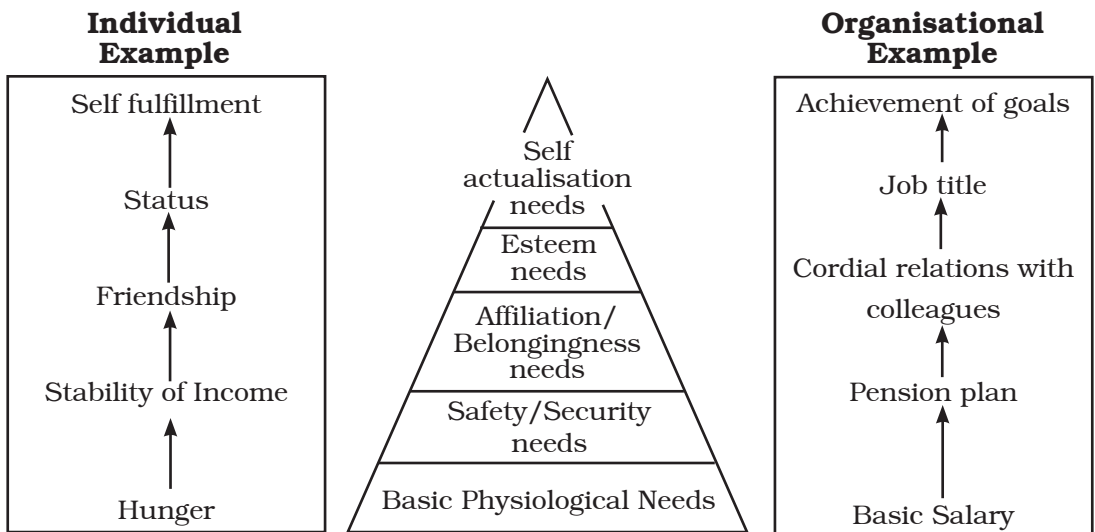
**Maslow's Need Hierarchy Theory of Motivation:** Since motivation is highly complex, many researchers have studied about motivation from several dimensions and developed some theories. These theories help to develop understanding about motivation phenomenon. Among

these, Maslow's Need Hierarchy Theory is considered fundamental to understanding of motivation. Let us examine it in detail.

Abraham Maslow, a well-known Psychologist in a classic paper published in 1943, outlined the elements of an overall theory of motivation.

His theory was based on human needs. He felt that within every human being, there exists a hierarchy of five needs. These are:

- (i) *Basic Physiological Needs:* These needs are most basic in the hierarchy and corresponds to primary needs. Hunger, thirst, shelter, sleep and sex are some examples of these needs. In the organisational context, basic salary helps to satisfy these needs.
- (ii) *Safety/Security Needs:* These needs provide security and protection from physical and emotional harm. Examples: job security, stability of income, Pension plans etc.,
- (iii) *Affiliation/Belonging Needs:* These needs refer to affection, sense of belongingness, acceptance and friendship.
- (iv) *Esteem Needs:* These include factors such as self-respect, autonomy status, recognition and attention.
- (v) *Self Actualisation Needs:* It is the highest level of need in the hierarchy. It refers to the drive to become what one is capable of



### *Maslow's Need Hierarchy Theory*

becoming. These needs include growth, self-fulfillment and achievement of goals.

Maslow's theory is based on the following assumptions:

- (i) People's behaviour is based on their needs. Satisfaction of such needs influences their behaviour.
- (ii) People's needs are in hierarchical order, starting from basic needs to other higher level needs.
- (iii) A satisfied need can no longer motivate a person; only next higher level need can motivate him.
- (iv) A person moves to the next higher level of the hierarchy only when the lower need is satisfied.

Maslow's Theory focuses on the needs as the basis for motivation. This theory is widely recognised and appreciated. However, some

of his propositions are questioned on his classification of needs and hierarchy of needs. But, despite such criticism, the theory is still relevant because needs, no matter how they are classified, are important to understand the behaviour. It helps managers to realise that need level of employee should be identified to provide motivation to them.

### **Financial and Non-Financial Incentives**

Incentive means all measures which are used to motivate people to improve performance. These incentives may be broadly classified as financial and non financial. Let us learn about these incentives in detail.

**Financial Incentives:** In the context of existing economic system, money

### Profile of Abraham Maslow (1908 – 1970)

Abraham H. Maslow was born in Brooklyn, New York, in 1908. He studied primate behavior at the University of Wisconsin, where he received his doctorate in psychology in 1934.

Early in his career, Maslow was drawn to the study of human motivation and personality. His work in this area upset strict behaviorists, whose explanations of motivation and personality failed to account for what Maslow called the whole person. His theory of the hierarchy of needs, which leads to the 'self-actualised' individual, was a strong catalyst for the founding of humanistic psychology. Maslow successfully bridged motivation and personality in his theories of needs, self-actualising persons, and peak experiences.

Maslow is considered an important figure in contemporary psychology. His career was a formidable one. For 14 years he taught at Brooklyn College, and then went to Brandeis University as chairman of the Psychology Department. In 1968 he was elected president of the American Psychological Association. In 1969 he went to the Laughlin Foundation in Menlo Park, California. He wrote two important books: *Toward a Psychology of Being* (1968) and *Motivation and Personality* (1970). Abraham Maslow died of a heart attack in 1970.

has become a means to satisfy the physical needs of daily life and also of obtaining social position and power. Since, money has the purchasing power, it becomes very important incentive for every individual.

Financial incentives refer to incentives which are in direct monetary form or measurable in monetary term and serve to motivate people for better performance. These incentives may be provided on individual or group basis. The financial incentives generally used in organisations are listed below:

(i) *Pay and allowances*: For every employee, salary is the basic monetary incentive. It includes basic pay, dearness allowance and other allowances. Salary system

consists of regular increments in the pay every year and enhancement of allowances from time-to-time. In some business organisations, pay hike and increments may be linked to performance.

- (ii) *Productivity linked wage incentives*: Several wage incentive plans aims at linking payment of wages to increase in productivity at individual or group level.
- (iii) *Bonus*: Bonus is an incentive offered over and above the wages/salary to the employees.
- (iv) *Profit Sharing*: Profit sharing is meant to provide a share to employees in the profits of the organisation. This serves to motivate the employees to improve their

performance and contribute to increase in profits.

(v) *Co-partnership/ Stock option:* Under these incentive schemes, employees are offered company shares at a set price which is lower than market price. Sometimes, management may allot shares in line of various incentives payable in cash. The allotment of shares creates a feeling of ownership to the employees and makes them to contribute for the growth of the organisation. In Infosys the scheme of stock option has been implemented as a part of managerial compensation.

(vi) *Retirement Benefits:* Several retirement benefits such as provident fund, pension, and gratuity provide financial security to employees after their retirement. This acts as an incentive when they are in service in the organisation.

(vii) *Perquisites:* In many companies perquisites and fringe benefits are offered such as car allowance, housing, medical aid, and education to the children etc., over and above the salary. These measures help to provide motivation to the employees/managers.

**Non-Financial Incentives:** All the needs of individuals are not satisfied by money alone. Psychological, social and emotional factors also play important role in providing motivation. Non-

financial incentives mainly focus on these needs. Some times, monetary aspect may be involved in non-financial incentives as well. However, the emphasis is to provide psychological and emotional satisfaction rather than money driven satisfaction. For example, if an individual gets promotion in the organisation, it satisfies him psychologically more as he gets a feeling of elevation, increase in status, increase in authority, challenge in the job etc., Though promotion involves payment of extra money, non-monetary aspects over-ride monetary aspects.

Some of the important non-financial incentives are discussed below:

(i) *Status:* In the organisational context, status means ranking of positions in the organisation. The authority, responsibility, rewards, recognition, perquisites and prestige of job indicate the status given to a person holding a managerial position. Psychological, social and esteem needs of an individual are satisfied by status given to their job.

(ii) *Organisational Climate:* Organisational climate indicates the characteristics which describe an organisation and distinguish one organisation from the other. These characteristics influence the behaviour of individuals in the organisation. Some of these characteristics are—individual autonomy, reward orientation, consideration to employees,

risk-tasking etc., If managers take positive measures regarding these aspects, it helps to develop better organisational climate.

(iii) *Career Advancement Opportunity:*

Every individual wants to grow to the higher level in the organisation. Managers should provide opportunity to employees to improve their skills and be promoted to the higher level jobs. Appropriate skill development programmes, and sound promotion policy will help employees to achieve promotions. Promotion works as a tonic and encourages employees to exhibit improved performance.

(iv) *Job Enrichment:*

Job enrichment is concerned with designing jobs that include greater variety of work content, require higher level of knowledge and skill; give workers more autonomy and responsibility; and provide the opportunity for personal growth and a meaningful work experience. If jobs are enriched and made interesting, the job itself becomes a source of motivation to the individual.

(v) *Employee Recognition programmes:*

Most people have a need for evaluation of their work and due recognition. They feel that what they do should be recognised by others concerned. Recognition means acknowledgment with a show of appreciation. When such

appreciation is given to the work performed by employees, they feel motivated to perform/work at higher level. Some examples of employee recognition are:

- Congratulating the employee for good performance.
- Displaying on the notice board or in the company news letter about the achievement of employee.
- Installing award or certificate for best performance.
- Distributing mementos, complimentaries like T-shirts in recognition of employee services.
- Rewarding an employee for giving valuable suggestions.

(vi) *Job security:* Employees want their job to be secure. They want certain stability about future income and work so that they do not feel worried on these aspects and work with greater zeal. In India, this aspect is more important considering the inadequate job opportunities and too many aspirants for these. However, there is one negative aspect of job security. When people feel that they are not likely to lose their jobs, they may become complacent.

(vii) *Employee participation:* It means involving employees in decision making of the issues related to them. In many companies, these programmes are in practice in



the form of joint management committees, work committees, canteen committees etc.,

- (viii) *Employee Empowerment*: Empowerment means giving more autonomy and powers to subordinates. Empowerment makes people feel that their jobs are important. This feeling contributes positively to the use of skills and talents in the job performance.

## LEADERSHIP

Whenever we hear the success stories of any organisation, we are immediately reminded of their leaders. Can you imagine Microsoft without Bill Gates, Reliance Industries without Ambanis, Infosys without Narayana Murthy, Tata without J.R.D. Tata or Wipro without Azim Premji. You would say it is not possible to achieve

success without such great leaders. The leaders always play a key role for the success and excellence of any organisation.

Let us understand the concept of leadership, its importance and qualities of good leaders. Leadership is the process of influencing the behaviour of people by making them strive voluntarily towards achievement of organisational goals. Leadership indicates the ability of an individual to maintain good interpersonal relations with followers and motivate them to contribute for achieving organisational objectives.

### Features of leadership

An examination of the above definition reveals the following important features of leadership:

- (i) Leadership indicates ability of an individual to influence others.

### Definitions of Leadership

Leadership is the activity of influencing people to strive willingly for group objectives.

George Terry

Leadership is the art or process of influencing people so that they will strive willingly and enthusiastically towards the achievement of group goals.

Harold Koontz and Heinz Weihrich

Leadership is a set of interpersonal behaviours designed to influence employees to cooperate in the achievement of objectives.

Glueck

Leadership is both a process and property. The process of leadership is the use of non-coercive influence to direct and coordinate the activities of the members of an organised group towards the accomplishment of group objectives. As a property, leadership is the set of qualities or characteristics attributed to those who are perceived to successfully employ such influence.

Gay and Strake

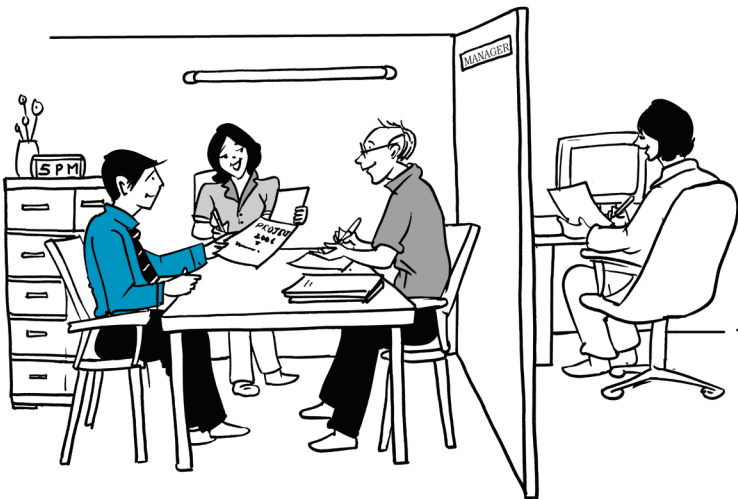
- (ii) Leadership tries to bring change in the behaviour of others.
- (iii) Leadership indicates interpersonal relations between leaders and followers.
- (iv) Leadership is exercised to achieve common goals of the organisation.
- (v) Leadership is a continuous process.

The term leader emerges from leadership. An individual possessing attributes of leadership is known as leader. While discussing about leadership, it is important to understand leader-follower relationship. Many times, the success of an organisation is attributed to the leader, but due credit is not given to the followers. Many followers

related factors like – their skills, knowledge, commitment, willingness to cooperate, team spirit etc., make a person an effective leader. It is said that followers make a person, a good leader by acceptance of leadership. Therefore, it is to be recognised that both leader and follower play key role in leadership process.

**Importance of Leadership:** Leadership is a key factor in making any organisation successful. History reveals that, many times, difference between success and failure of an organisation is leadership. It is aptly mentioned by Stephen Covey, a famous management consultant, that managers are important but leaders are vital for lasting organisational success. A leader not only commits

— Effective leadership is getting work done, tasks completed on time and goals achieved at minimum cost



his followers to organisational goals but also pools needed resources, guides and motivates subordinates to reach the goals.

The importance of leadership can be discussed from the following benefits to the organisation:

- (i) Leadership influences the behaviour of people and makes them to positively contribute their energies for the benefit of the organisation. Good leaders
- (ii) A leader maintains personal relations and helps followers in fulfilling their needs. He provides needed confidence, support and encouragement and thereby creates congenial work environment.
- (iii) Leader plays a key role in introducing required changes in the organisation. He persuades,

always produce goods results through their followers.

### Leadership at Infosys

It is interesting and inspiring to know about N. R. Narayana Murthy, Ex-Chairman of Infosys, an IT legend, institution builder, a leader par excellence and embodiment of directing abilities.

Born on August 20, 1946 in Karnataka State, Mr. Narayana Murthy graduated (B.E.) from University of Mysore (1967), and obtained master degree (M.Tech) from IIT, Kanpur in 1969. He started his career as head of the computer centre at IIM, Ahmedabad.

He started Infosys, a small software company along with his friends in 1981 and turned it into a global IT company by 2002. He was the chief mentor, CEO of the company for two decades. During that time he took the company to unimaginable heights. With an equity capital of Rs. 10,000 in 1981, Infosys market capitalisation reached Rs. 11 billion by 2001. Infosys became one of the biggest exporter of software from India. It is the first company to be listed in Nasdaq Stock Market in 1999.

Narayana Murthy is remembered as a top leader for many things. He had supreme confidence on his team members, executives and workers. He nurtured and developed leadership qualities through coaching and training. He started Infosys Leadership Institute in early 2001 to help promising infoscians to develop into global leaders.

Mr. Murthy leads by example and by trust. Very often he used to say "A true leader is one who leads by example and sacrifices more than any one else, in his or her pursuit of excellence". He truly practiced and proved it in Infosys.

Mr. Murthy always motivated his team. He introduced number of motivational schemes including the novel Stock option scheme for the executives of Infosys.

Narayana Murthy was associated with many national and international bodies in different capacities and extended his services to the wide ranging activities. He received number of awards and rewards from academic, social and business community. Following the norms setup by himself, Narayana Murthy handed over reins of Infosys to his friend and co-founder Nandan Nilekani in 2002.

clarifies and inspires people to accept changes whole-heartedly. Thus, he overcomes the problem of resistance to change and introduces it with minimum discontentment.

- (iv) A leader handles conflicts effectively and does not allow adverse effects resulting from the conflicts. A good leader always allows his followers to ventilate their feelings and disagreement but persuades them by giving suitable clarifications.
- (v) Leader provides training to their subordinates. A good leader always builds up his successor

and helps in smooth succession process.

**Qualities of Good Leader:**

What are the qualities possessed by a good leader? Are there any common traits (qualities) applicable to all good leaders? How many such qualities should a leader possess to be successful?

One approach to leadership emphasises that a person should possess certain qualities or traits to become a successful leader. It assumes that leaders can be distinguished from non leaders by certain unique traits possessed by them. The qualities of

**Qualities of a Good Leader**

In all about 18,000 traits were identified by researchers. The qualities of a good leader as mentioned by some authorities on the subject are given below:

Energy, emotional stability, knowledge of human relations, motivation, communication, skill, teaching ability, social skill and technical competence.

Gerge Terry

Vitality and endurance, decisiveness, persuasiveness, stability in behaviour, intellectual ability and knowledge.

Chester Barnard

Physical and nervous energy, enthusiasm, sense of purpose and direction, technical mastery, friendliness and affection, decisiveness.

Ordway Tead

Courage, will power, judgment, flexibility, knowledge and integrity.

Vicout Slim

Supervisory ability, achievement motivation, self-actualising, intelligence, self assurance, decisiveness.

Ghiselli

Courage, self-confidence, moral qualities, self sacrifice, paternalism, fairness.

Hill

Physical and constitutional factors, intelligence, self-confidence, sociability, will, dominance.

Stodgil

good leaders as identified by some researchers are shown in the box in previous page.

Some of these qualities are explained below:

- (i) *Physical features:* Physical features like height, weight, health, appearance determine the physical personality of an individual. It is believed that good physical features attract people. Health and endurance help a leader to work hard which inspires others to work with same tempo.
- (ii) *Knowledge:* A good leader should have required knowledge and competence. Only such person can instruct subordinates correctly and influence them.
- (iii) *Integrity:* A leader should possess high level of integrity and honesty. He should be a role model to others regarding the ethics and values.
- (iv) *Initiative:* A leader should have courage and initiative. He should not wait for opportunities come to his way, rather he should grab the opportunity and use it to the advantage of organisation.
- (v) *Communication skills:* A leader should be a good communicator. He should have the capacity to clearly explain his ideas and make the people to understand his ideas. He should be not only good speaker but a good listener, teacher, counsellor and persuader.
- (vi) *Motivation skills:* A leader should be an effective motivator. He should understand the needs of people and motivate them through satisfying their needs.
- (vii) *Self Confidence:* A leader should have high level of self confidence. He should not lose his confidence even in most difficult times. In fact, if the leader lacks self

### Leadership and Team work in HCL Technologies

HCL Technologies has formulated a rather innovative approach to management, where employees come before customers. Every employee ranks their boss, their boss's boss, and at least three other company managers on a 1-to-5 scale. Then the results are posted online for everyone to see.

This company realizes that satisfied and secure employees can best focus on customer success. HCL has formed new strategic alliances, and is embarking on a rather innovative approach to shared risk with customers.

The point is that Indian companies aren't just innovating manufacturing methods, technologies, and product design. Their leaders are also re-thinking leadership and management to create energised creative teams of employees focused on customer success.

Source: [http://www.evangelizingexcellence.com/blog/2006/04/the\\_future\\_of\\_m.html](http://www.evangelizingexcellence.com/blog/2006/04/the_future_of_m.html)

confidence, he can not provide confidence to his followers.

(viii) *Decisiveness*: Leader should be decisive in managing the work. Once he is convinced about a fact, he should be firm and should not change opinions frequently.

(ix) *Social skills*: A leader should be sociable and friendly with his colleagues and followers. He should understand people and maintain good human relations with them.

However, we should remember that all good leaders may not necessarily possess all the qualities of a good leader. In fact, it is not possible for any individual to have all the qualities. But an understanding about these qualities help the managers to acquire them through training and conscious efforts.

## COMMUNICATION

Communication plays key role in the success of a manager. How

much professional knowledge and intelligence a manager possesses becomes immaterial if he is not able to communicate effectively with his subordinates and create understanding in them. Directing abilities of a manager mainly depend upon his communication skills. That is why organisation always emphasise on improving communication skills of managers as well as employees.

The word communication has been derived from the Latin word 'communis' which means 'common' which consequently implies common understanding. Communication is defined in different ways. Generally, it is understood as a process of exchange of ideas, views, facts, feelings etc., between or among people to create common understanding.

Some of the definitions given by management experts are presented in the box.

A close examination of above definitions reveals that communication

### Definitions of Communication

Communication is the sum of all things one person does when he wants to create understanding in the mind of another. It involves systematic and continuous process of telling, listening and understanding.

*Louis Allen*

Communication is transfer of information from the sender to the receiver with the information being understood by the receiver.

*Harold Koontz and Heniz Weihrich*

Communication is a process by which people create and share information with one another in order to reach common understanding.

*Rogers*

 *Effective Communication  
increases managerial efficiency*



is the process of exchange of information between two or more persons to reach common understanding.

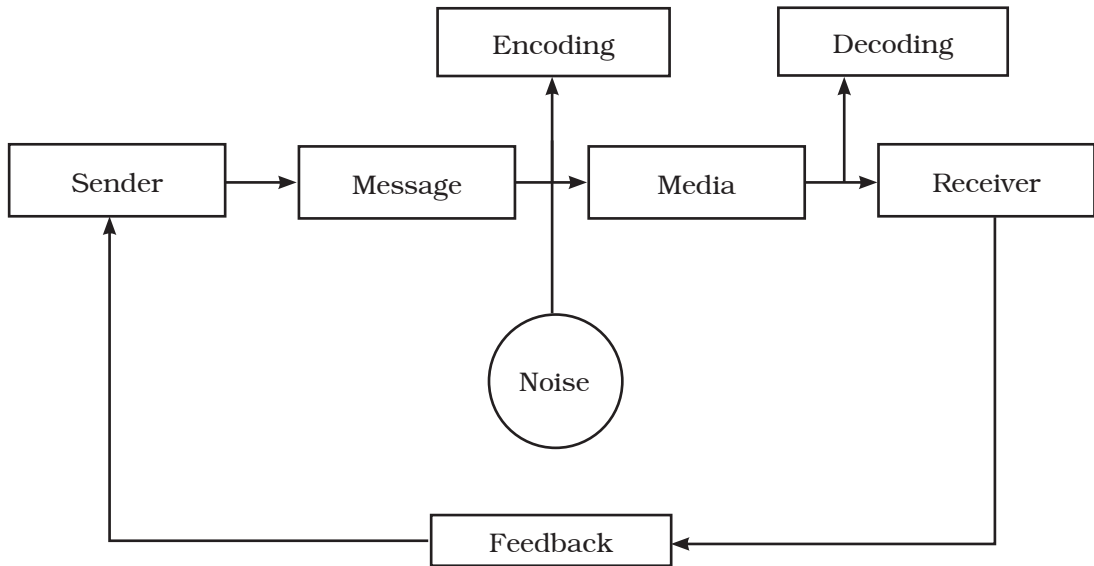
### **Elements Of Communication Process**

Communication has been defined as a process. This process involves elements like source, encoding, media/channel, receiver, decoding, noise and feedback. The process is represented in the figure.

The elements involved in communication process are explained below:

- (i) **Sender:** Sender means person who conveys his thoughts or ideas to the receiver. The sender represents source of communication.
- (ii) **Message:** It is the content of ideas, feelings, suggestions, order etc., intended to be communicated.
- (iii) **Encoding:** It is the process of converting the message into communication symbols such as words, pictures, gestures etc.,
- (iv) **Media:** It is the path through which encoded message is transmitted to receiver. The channel may be in written form, face to face, phone call, internet etc.,
- (v) **Decoding:** It is the process of converting encoded symbols of the sender.
- (vi) **Receiver:** The person who receives communication of the sender.





### Communication Process

(vii) **Feedback:** It includes all those actions of receiver indicating that he has received and understood message of sender.

(viii) **Noise:** Noise means some obstruction or hindrance to communication. This hindrance may be caused to sender, message or receiver. Some examples of noise are:

- Ambiguous symbols that lead to faulty encoding.
- A poor telephone connection.
- An inattentive receiver.
- Faulty decoding (attaching wrong meanings to message).
- Prejudices obstructing the poor understanding of message.

(f) Gestures and postures that may distort the message.

### **Importance of Communication**

Communication is one of the most central aspects of managerial activities. It has been estimated that a manager spends 90 percent of his time in communicating—reading, writing, listening, guiding, instructing, approving, reprimanding, etc. Effectiveness of a manager depends significantly on his ability to communicate effectively with his superiors, subordinates and external agencies such as bankers, suppliers, union and government.

An ex-president of American Management Association once observed

that number one management problem today is communication. Bernard has called it the foundation of all group activities. Communication serves as the lubricant fostering for the smooth operations of the management process. The importance of communication in management can be judged from the following:

(i) *Acts as basis of coordination:* Communication acts as basis of coordination. It provides coordination among departments, activities and persons in the organisation. Such coordination is provided by explaining about organisational goals, the mode of their achievement and inter relationships between different individuals etc.

(ii) *Helps in smooth working of an enterprise:* Communication makes possible for the smooth and unrestricted working of the enterprise. All organisational interactions depend on communications. The job of a manager is to coordinate the human and physical elements of an organisation into an efficient and active working unit that achieves common objectives. It is only communication which makes smooth working of an enterprise possible. Communication is basic to an organisation's existence-right from its birth through its continuing life. When

communication stops, organised activity ceases to exist.

(iii) *Acts as basis of decision making:* Communication provides needed information for decision making. In its absence, it may not be possible for the managers to take any meaningful decision. Only on the basis of communication of relevant information one can take right decision.

(iv) *Increases managerial efficiency:* Communication is essential for quick and effective performance of managerial functions. The management conveys the goals and targets, issues instructions, allocates jobs and responsibilities and looks after the performance of subordinates. Communication is involved in all these aspects. Thus, communication lubricates the entire organisation and keeps the organisation at work with efficiency.

(v) *Promotes cooperation and industrial peace:* Efficient operation is the aim of all prudent management. It may be possible only when there is industrial peace in the factory and mutual cooperation between management and workers. The two way communication promotes cooperation and mutual understanding between the management and workers.

(vi) *Establishes effective leadership:* Communication is the basis of

leadership. Effective communication helps to influence subordinates. While influencing people, leader should possess good communication skills.

- (vii) *Boosts morale and provides motivation:* An efficient system of communication enables management to motivate, influence and satisfy the subordinates. Good communication assists the workers in their adjustment with the physical and social aspect of work. It improves good human relations in industry. Communication is the basis of participative and democratic pattern of management. Communication helps to boost morale of employees and managers.

classified as formal and informal communication.

### Formal Communication

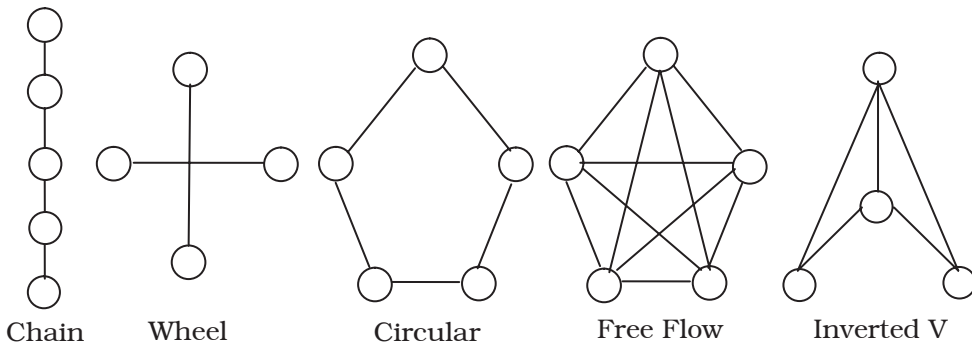
Formal communication flows through official channels designed in the organisation chart. This communication may take place between a superior and subordinate, a subordinate and superior or among same cadre employees or managers. The communications may be oral or written but generally recorded and filed in the office.

Formal communication may be further classified as – Vertical and Horizontal.

Vertical communication flows vertically i.e., upwards or downwards through formal channels. Upward communications refer to flow of communication from subordinate to superior whereas downward communication indicates communication from a superior to subordinate. The examples of upward communication are – application for grant of leave,

## FORMAL AND INFORMAL COMMUNICATION

Communication taking place within an organisation may be broadly



submission of progress report, request for grants etc. Similarly, the examples of downward communication include – sending notice to employees to attend a meeting, ordering subordinates to complete an assigned work, passing on guidelines framed by top management to the subordinates etc.,

Horizontal or lateral communication takes place between one division and another. For example, a production manager may contact marketing manager to discuss about schedule of product delivery, product design, quality etc.

The pattern through which communication flows within the organisation is generally indicated through communication network. Different types of communication networks may operate in formal organisation. Some of the popular communication networks are presented and discussed in given figure.

- (i) *Single chain*: This network exists between a supervisor and his subordinates. Since many levels exist in an organisation structure, communication flows from every superior to his subordinate through single chain.
- (ii) *Wheel*: In wheel network, all subordinates under one superior communicate through him only as he acts as a hub of the wheel. The subordinates are not allowed to talk among themselves.
- (iii) *Circular*: In circular network, the communication moves in a circle.

Each person can communicate with his adjoining two persons. In this network, communication flow is slow.

- (iv) *Free flow*: In this network, each person can communicate with others freely. The flow of communication is fast in this network.
- (v) *Inverted V*: In this network, a subordinate is allowed to communicate with his immediate superior as well as his superiors superior. However, in later case, only prescribed communication takes place.

### **Informal Communication**

Communication that takes place without following the formal lines of communication is said to be informal communication. Information system of communication is generally referred to as the 'grapevine' because it spreads throughout the organisation with its branches going out in all directions in utter disregard to the levels of authority.

The informal communication arises out of needs of employees to exchange their views, which cannot be done through formal channels. Workers chit chatting in a canteen about the behaviour of the superior, discussing about rumours that some employees are likely to be transferred are some examples of informal communications. The grapevine/informal communication spreads rapidly and sometimes gets distorted.

It is very difficult to detect the source of such communication. It also leads to generate rumours which are not authentic. People's behaviour is affected by rumours and informal discussions and sometimes may hamper work environment. Sometimes, grapevine channels may be helpful as they carry information rapidly and, therefore, may be useful to the manager at times. Informal channels are used by the managers to transmit information so as to know the reactions of his/her subordinates. An intelligent manager should make use of positive aspects of informal channels and minimise negative aspects of this channel of communication.

### Grapevine Network

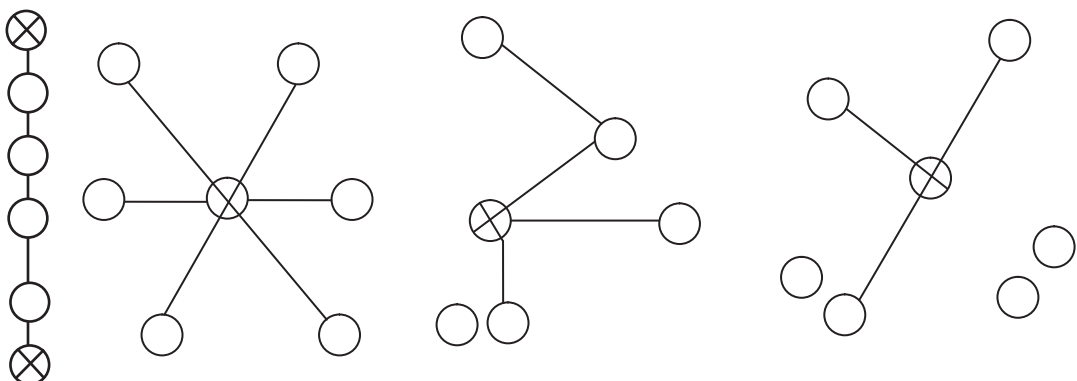
Grapevine communication may follow different types of network. Some of these networks are shown in figure given below.

In single strand network, each person communicates to the other in sequence. In gossip network, each person communicates with all on non-selective basis. In probability network, the individual communicates randomly with other individual. In cluster, the individual communicates with only those people whom he trusts of these four types of networks. Cluster is the most popular in organisations.

### Barriers to Communication

It is generally observed that managers face several problems due to communication breakdowns or barriers. These barriers may prevent a communication or filter part of it or carry incorrect meaning due to which misunderstandings may be created. Therefore, it is important for a manager to identify such barriers and take measures to overcome them.

The barriers to communication in the organisations can be broadly grouped



 Grapevine Communication Networks



Communication Grapevine



as: semantic barriers, psychological barriers, organisational barriers, and personal barriers. These are briefly discussed below:

**Semantic barriers:** Semantics is the branch of linguistics dealing with the meaning of words and sentences. Semantic barriers are concerned with problems and obstructions in the process of encoding and decoding of message into words or impressions. Normally, such barriers result on account of use of wrong words, faulty translations, different interpretations etc. These are discussed below:

(i) *Badly expressed message:* Some times intended meaning may

not be conveyed by a manager to his subordinates. These badly expressed messages may be an account of inadequate vocabulary, usage of wrong words, omission of needed words etc.

- (ii) *Symbols with different meanings:* A word may have several meanings. Receiver has to perceive one such meaning for the word used by communicator. For example, consider these three sentences where the word 'value' is used:
- (a) What is the value of this ring?
  - (b) I value our friendship.
  - (c) What is the value of learning computer skills?

You will find that the 'value' gives different meaning in different contexts. Wrong perception leads to communication problems.

- (iii) *Faulty translations:* Sometimes the communications originally drafted in one language (e.g., English) need to be translated to the language understandable to workers (e.g., Hindi). If the translator is not proficient with both the languages, mistakes may creep in causing different meanings to the communication.
- (iv) *Unclearified assumptions:* Some communications may have certain assumptions which are subject to different interpretations. For example, a boss may instruct his subordinate, "Take care of our guest". Boss may mean that subordinate should take care of transport, food, accommodation of the guest until he leaves the place. The subordinate may interpret that guest should be taken to hotel with care. Actually, the guest suffers due to these unclearified assumptions.
- (v) *Technical jargon:* It is usually found that specialists use technical jargon while explaining to persons who are not specialists in the concerned field. Therefore, they may not understand the actual meaning of many such words.
- (vi) *Body language and gesture decoding:* Every movement

of body communicates some meaning. The body movement and gestures of communicator matters so much in conveying the message. If there is no match between what is said and what is expressed in body movements, communications may be wrongly perceived.

**Psychological barriers:** Emotional or psychological factors acts as barriers to communicators. For example, a worried person cannot communicate properly and an angry receiver cannot understand the real meaning of message. The state of mind of both sender and receiver of communication reflects in the effective communication. Some of the psychological barriers are:

- (i) *Premature evaluation:* Some times people evaluate the meaning of message before the sender completes his message. Such premature evaluation may be due to pre-conceived notions or prejudices against the communication.
- (ii) *Lack of attention:* The pre-occupied mind of receiver and the resultant non-listening of message acts as a major psychological barrier. For instance, an employee explains about his problems to the boss who is pre-occupied with an important file before him. The boss does not grasp the message and the employee is disappointed.



(iii) *Loss by transmission and poor retention:* When communication passes through various levels, successive transmissions of the message results in loss of, or transmission of inaccurate information. This is more so in case of oral communication.

Poor retention is another problem. Usually people cannot retain the information for a long time if they are inattentive or not interested.

(iv) *Distrust:* Distrust between communicator and communicatee acts as a barrier. If the parties do not believe each other, they can not understand each others message in its original sense.

**Organisational barriers:** The factors related to organisation structure, authority relationships, rules and regulations may, sometimes, act as barriers to effective communication. Some of these barriers are:

(i) *Organisational policy:* If the organisational policy, explicit or implicit, is not supportive to free flow of communication, it may hamper effectiveness of communications. For example, in an organisation with highly centralised pattern, people may not be encouraged to have free communication.

(ii) *Rules and regulations:* Rigid rules and cumbersome procedures may be a hurdle to communication. Similarly, communications

through prescribed channel may result in delays.

(iii) *Status:* Status of superior may create psychological distance between him and his subordinates. A status conscious manager also may not allow his subordinates to express their feelings freely.

(iv) *Complexity in organisation structure:* In an organisation where there are number of managerial levels, communication gets delayed and distorted as number of filtering points are more.

(v) *Organisational facilities:* If facilities for smooth, clear and timely communications are not provided communications may be hampered. Facilities like frequent meetings, suggestion box, complaint box, social and cultural gathering, transparency in operations etc., will encourage free flow of communication. Lack of these facilities may create communication problems.

**Personal barriers:** The personal factors of both sender and receiver may exert influence on effective communication. Some of the personal barriers of superiors and subordinates are mentioned below:

(i) *Fear of challenge to authority:* If a superior perceives that a particular communication may adversely affect his authority, he or she may withhold or suppress such communication.

- (ii) *Lack of confidence of superior on his subordinates:* If superiors do not have confidence on the competency of their subordinates, they may not seek their advice or opinions.
- (iii) *Unwillingness to communicate:* Sometimes, subordinates may not be prepared to communicate with their superiors, if they perceive that it may adversely affect their interests.
- (iv) *Lack of proper incentives:* If there is no motivation or incentive for communication, subordinates may not take initiative to communicate. For example, if there is no reward or appreciation for a good suggestion, the subordinates may not be willing to offer useful suggestions.

### **Improving Communication Effectiveness**

The barriers to effective communication exists in all organisations to a greater or lesser degree. Organisations keen on developing effective communication should adopt suitable measures to overcome the barriers and improve communication effectiveness. Some such measures are indicated below:

- (i) *Clarify the ideas before communication:* The problem to be communicated to subordinates should be clear in all its perspective to the executive himself. The entire problem should be studied in depth, analysed and stated in such a manner that is clearly conveyed to subordinates.
- (ii) *Communicate according to the needs of receiver:* The level of understanding of receivers should be crystal clear to the communicator. Manager should adjust his communication according to the education and understanding levels of subordinates.
- (iii) *Consult others before communicating:* Before actually communicating the message, it is better to involve others in developing a plan for communication. Participation and involvement of subordinates may help to gain ready acceptance and willing cooperation of subordinates.
- (iv) *Be aware of languages, tone and content of message:* The contents of the message, tone, language used, manner in which the message is to be communicated are the important aspects of effective communication. The language used should be understandable to the receiver and should not offend the sentiments of listeners. The message should be stimulating to evoke response from the listeners.
- (v) *Convey things of help and value to listeners:* While conveying message to others, it is better to know the interests and needs of the people with whom you are communicating. If the message

relates directly or indirectly to such interests and needs it certainly evokes response from communicatee.

- (vi) *Ensure proper feedback:* The communicator may ensure the success of communication by asking questions regarding the message conveyed. The receiver of communication may also be encouraged to respond to communication. The communication process may be improved by the feedback received to make it more responsive.
- (vii) *Communicate for present as well as future:* Generally, communication is needed to meet the

existing commitments, to maintain consistency, the communication should aim at future goals of the enterprise also.

- (viii) *Follow up communications:* There should be regular follow up and review on the instructions given to subordinates. Such follow up measures help in removing hurdles if any in implementing the instructions.
- (ix) *Be a good listener:* Manager should be a good listener. Patient and attentive listening solves half of the problems. Managers should also give indications of their interest in listening to their subordinates.

### Key Terms

Directing | Supervision | Motives | Motivation | Incentives

Self actualisation | Egoistic needs | Leadership | Trait approach

Communication | Encoding | Decoding | Feedback

Semanticism | Formal communication

Informal communication | Profit sharing | Copartnership

Quality circles | Stock options

### Summary

Directing is a complex managerial function consisting of all the activities that are designed to encourage subordinates to work effectively. It includes supervision, motivation, communication and leading. The principles which guide effective directing may be classified as principles related to the purpose of directing and principles related to direction process.

**Supervision:** It is an element of direction. It can be understood as a process as well as the functions performed by supervisor (a

position at operative level). Supervision is very important as it is closely linked to overseeing the work, guiding and ensuring that targets are met by workers and employees.

**Motivation:** Motivation is the process of stimulating people to action to accomplish desired goals of organisation. It is an internal feeling of an individual and leads to goal directed behaviour. Motivation is mainly based on needs of individuals. It helps individuals and groups in the organisation for improved performance.

Managers offer incentives to employees both financial and non financial. Financial incentives are monetary and may be in the form of salary, bonus, profit sharing, pension etc. Non financial incentives provide social and psychological satisfaction. These include status, promotion, responsibility, job enrichment, job recognition, job security, employee participation, delegation, empowerment etc.

One important theory of motivation is Maslow's Need Hierarchy theory. According to this theory, motivation to be provided depends on needs which are hierarchical in nature. The needs in this hierarchy have been classified as physiological needs, safety needs, social needs, egoistic needs and self-actualisation needs. It assumes that a satisfied need seldom motivates and only higher level need can motivate a person. This theory is relevant even today, as it focuses on needs which are basis for motivation.

**Leadership:** Leadership is most important factor in the success of an enterprise. It is the process of influencing people to strive willingly for group objectives. The qualities of a good leader have been researched by many experts. Some of the qualities of good leader include—courage, will power, judgement, knowledge, integrity, physical energy, faith, moral qualities, fairness, vitality, decisiveness, social skills etc. But all these qualities cannot be possessed by one individual nor always help in their success.

**Communication:** Communication refers to process of exchange of ideas between or among persons and create understanding. Communication process involves the elements of source, encoding, channel, receiver, decoding and feedback. In organisations, both formal and informal communications simultaneously takes place. Formal communications refers to all official communications in the form of orders, memos, appeals, notes, circulars, agenda, minutes etc. Apart from formal communications, informal or grapevine communications also exist. Informal communications

are usually in the form of rumours, whispers etc. They are unofficial, spontaneous, unrecorded, spread very fast and usually distorted. A manager should learn to manage with informal communication also. In most of the organisations, several barriers may exist for effective communications. Some of these barriers include – semantic barriers, organisational barriers, language barriers, transmission barriers, psychological barriers and personal barriers. Managers should take appropriate measures to overcome these barriers and promote effective communication in the organisation.

### Exercises

#### Multiple Choice

1. Which one of the following is not an element of direction?  
(a) Motivation (b) Communication  
(c) Delegation (d) Supervision
2. The motivation theory which classifies needs in hierarchical order is developed by  
(a) Fred Luthans (b) Scott  
(c) Abraham Maslow (d) Peter F. Drucker
3. Which of the following is a financial incentive?  
(a) Promotion (b) Stock Incentive  
(c) Job Security (d) Employee Participation
4. Which of the following is not an element of communication process?  
(a) Decoding (b) Communication  
(c) Channel (d) Receiver
5. Grapevine is  
(a) Formal communication  
(b) Barrier to communication  
(c) Lateral communication  
(d) Informal communication
6. Status comes under the following type of barriers  
(a) Semantic barrier (b) Organisational barrier  
(c) Non Semantic barrier (d) Psychological barrier
7. The software company promoted by Narayana Murthy is  
(a) Wipro (b) Infosys  
(c) Satyam (d) HCL

8. The highest level need in the need Hierarchy of Abraham Maslow:
 

(a) Safety need	(b) Belongingness need
(c) Self actualisation need	(d) Prestige need
9. The process of converting the message into communication symbols is known as-
 

(a) Media	(b) Encoding
(c) Feedback	(d) Decoding
10. The communication network in which all subordinates under a supervisor communicate through supervisor only is:
 

(a) Single chain	(b) Inverted V
(c) Wheel	(d) Free flow

### **Short Answer Type**

1. Distinguish between leaders and managers.
2. Define Motivation
3. What is informal communication?
4. What are semantic barriers of communication?
5. Who is a supervisor?
6. What are the elements of directing?
7. Explain the process of motivation?
8. Explain different networks of grapevine communications?

### **Long Answer Type**

1. Explain the principles of Directing?
2. Explain the qualities of a good leader? Do the qualities alone ensure leadership success?
3. Discuss Maslow's Need Hierarchy theory of motivation.
4. What are the common barriers to effective communication? Suggest measures to overcome them.
5. Explain different financial and non-financial incentives used to motivate employees of a company?

### **Application type**

1. The workers always try to show their inability when any new work is given to them. They are always unwilling to take up any kind of work. Due to sudden rise in demand a firm wants to meet excess orders. The supervisor is finding it difficult to cope up with the situation. Suggest ways for the supervisor to handle the problem.

2. Workers of a factory often seek guidance of Production Managers. The production manager finds himself overburdened. Advise the way to relieve production manager.
3. In an organisation employees always feel they are under stress. They take least initiative and fear to express their problems before the manager. What do you think is wrong with the manager ?
4. In an organisation all the employees take things easy and are free to approach anyone for minor queries and problems. This has resulted in everyone taking to each other and thus resulting in inefficiency in the office. It has also resulted in loss of secrecy and confidential information being leaked out. What system do you think the manager should adopt to improve communication.

### Project Work

#### Project Work and Assignments

1. The teacher will select five students as a group and one student as a judge. Each student in the group prepares a talk on any topic about ten sentences. Each student shall present his talk while others listen carefully. Finally, the judge asks each person five questions from five presentations. Each successful answer carries two marks. This exercise helps to identify listening ability.
2. Conduct a survey on your classmates and ask them about their motives regarding the following:
  - (i) Joining school
  - (ii) Choosing course of study
  - (ii) Buying a brand of pen
  - (iv) Going to a movie
  - (v) Viewing a TV channel/ProgrammeList out the motives common to most students for each of the above.
3. Identify barriers of communication
  - (i) Between you and your teacher
  - (ii) Between you and your friend
  - (iii) Between you and your brother/sisterSuggest measures to overcome these barriers. Are they similar to what managers would do.



4. Meet 10 people for each of the following product they have recently purchased
  - (i) Detergent soap
  - (ii) Fairness cream
  - (iii) Motor bike

Ask them about their motives in buying the product/ brand. Identify the buying motives for each product and present it in the classroom.

### Case Problem

Y limited is a bank functioning in India. It is planning to diversify into insurance business. Lately, the government of India has allowed the private sector to gain entry in the insurance business. Previously, it was the prerogative of LIC and GIC to do insurance business. But now with liberalisation of the economy and to make the field competitive other companies have been given licenses to start insurance business under the regulation of 'Insurance Regulatory and Development Authority'.

Y limited plans to recruit high quality employees and agents and exercise effective direction to capture a substantial part of life and non life insurance business.

### Questions

1. Identify how the company can supervise its employees and agents effectively. What benefits will the company derive from effective supervision?
2. What financial and non-financial incentives can the company use for employees and agents separately to motivate them. What benefits will the company get from them?
3. How can the company ensure that higher order needs i.e., esteem and self-actualisation as specified by Abraham Maslow are met?
4. Identify the qualities of leadership in this line of business that the company managers must possess to motivate employees and agents.
5. Give a model of formal communication system that the company can follow. Identify the barriers in this model. How can they be removed?
6. How can informal communication help to supplement formal communication model given by you in answer to question 5?